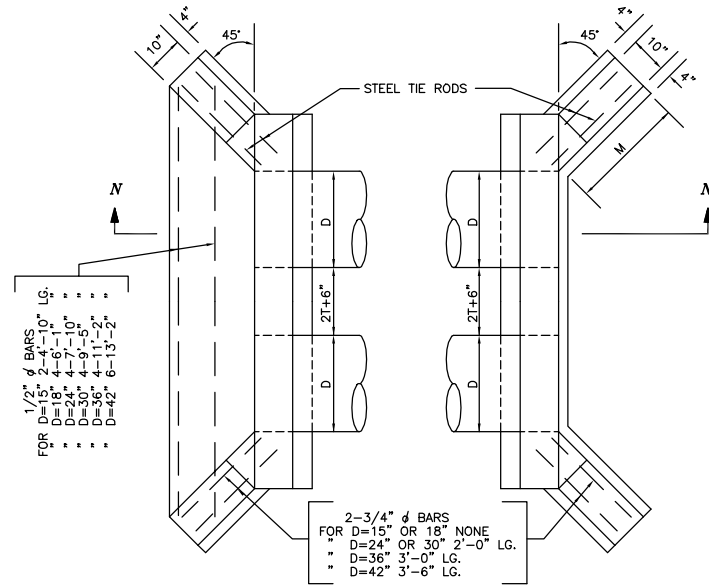


UPSTREAM END
END ELEVATION



PLAN

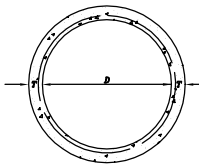
3'-0"	D=15"
3'-5"	D=18"
4'-0"	D=24"
4'-6"	D=30"
5'-4"	D=36"
6'-0"	D=42"
5'-4 1/2"	D=15"
5'-11"	D=18"
7'-0"	D=24"
8'-1"	D=30"
9'-2"	D=36"
10'-3"	D=42"

BENDING BARS A

Chamfer all exposed edges 3/4".
Unless otherwise specified, all exposed concrete surfaces shall have a finish in accordance with the current standard specifications.
All construction and materials requirements shall be in accordance with the current standard specifications.

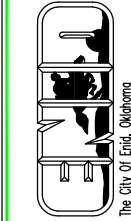
OPENING	DIMENSIONS						QUANTITIES IN ONE ENDWALL					ADDITIONAL MATERIAL REQUIRED FOR APRON	
	D	AREA SQ.FT.	H	G	L	M	F	WALL CU.FT.	FOOTING CU.FT.	TOTAL CU.FT.	TOTAL CU.YD.	REINF. STEEL LBS.	CONC.
15"	2.5	2'-3"	5'-8 1/2"	1'-0"	1'-1"	1'-2"	8.6	11.4	20.0	0.74	50	.06	7.
18"	3.5	2'-6"	6'-3"	1'-2"	1'-7"	1'-3"	10.9	15.1	26.0	0.96	57	.16	17.
24"	6.3	3'-0"	7'-4"	1'-5"	2'-1"	1'-4"	15.1	20.3	35.4	1.31	78	.33	21.
30"	9.8	3'-6"	8'-5"	1'-9"	2'-5"	1'-6"	19.4	26.8	46.2	1.71	88	.54	26.
36"	14.1	4'-0"	9'-6"	2'-0"	2'-11"	1'-8"	24.8	35.0	59.8	2.21	104	.93	30.
42"	19.2	4'-6"	10'-7"	2'-3"	3'-6"	1'-10"	31.3	44.7	76.0	2.81	117	1.47	53.

DIMENSIONS	
D	T
15"	2-1/4"
18"	2-1/2"
24"	3"
30"	3-1/2"
36"	4"
42"	4-1/2"



REINFORCED CONCRETE PIPE

The City of End
401 West
City, Oklahoma
Telephone: (505) 234-8446
Fax: (505) 234-8446
Contacts:
Robert Hill, Director of Engineering Services, Est. 344
Joan Bivens, Civil Engineer, Est. 348



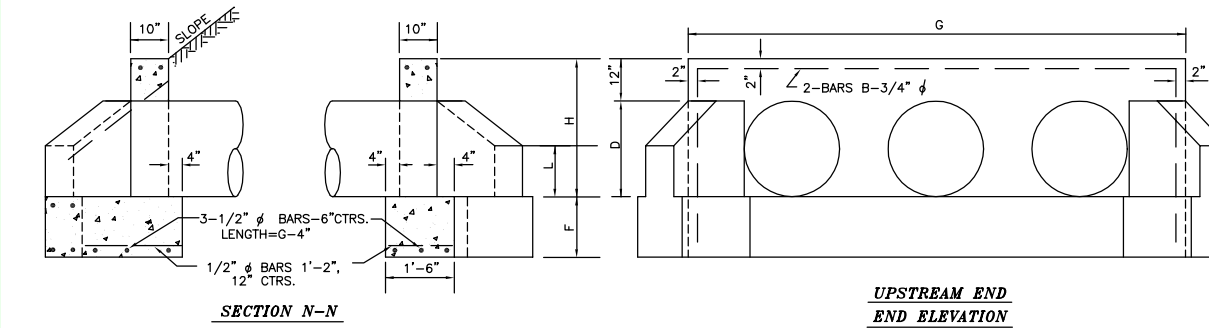
REVISIONS	Date	Description
1	10/18/94	This Sheet
2	3/3/00	Specification Revise Changes

Project Number:
Project Location:
DD - 5

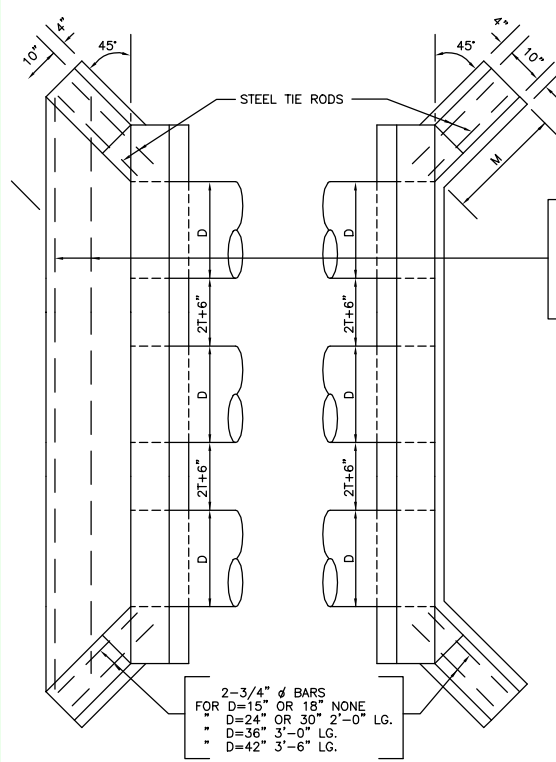
Sheet Title:
CONCRETE ENDWALLS FOR DOUBLE CONCRETE PIPE CULVERTS



Date: 8/1/81
Scale: NO SCALE
Cod File: G:\DATA\SPECS\005-6
Drawn By: P.B.
Designed By: R.H.
Approved By: R.H.
Sheet: of



UPSTREAM END
END ELEVATION



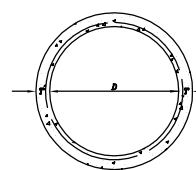
BENDING BARS B

3'-0"	D=15"
3'-5"	D=18"
4'-0"	D=24"
4'-6"	D=30"
5'-4"	D=36"
6'-0"	D=42"
7'-6"	D=15"
8'-4"	D=18"
10'-0"	D=24"
11'-8"	D=30"
13'-4"	D=36"
15'-0"	D=42"

Chamfer all exposed edges 3/4".
Unless otherwise specified, all exposed concrete surfaces shall have a finish in accordance with the current standard specifications.
All construction and materials requirements shall be in accordance with the current standard specifications.

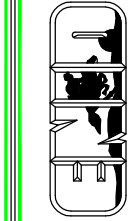
OPENING	DIMENSIONS						QUANTITIES IN ONE ENDWALL					ADDITIONAL MATERIAL REQUIRED FOR APRON	
	D	AREA SQ.FT.	H	G	L	M	F	WALL CU.FT.	FOOTING CU.FT.	TOTAL CU.FT.	TOTAL CU.YD.	REINF. STEEL LBS.	CONC.
15"	3.7	2'-3"	7'-10"	1'-0"	1'-1"	1'-2"	10.8	15.1	25.9	.96	62.	.10	10.
18"	5.3	2'-6"	8'-8"	1'-2"	1'-7"	1'-3"	13.5	19.7	33.2	1.23	70.	.25	23.
24"	9.4	3'-0"	10'-4"	1'-5"	2'-1"	1'-4"	18.5	26.3	44.8	1.66	95.	.50	29.
30"	14.7	3'-6"	12'-0"	1'-9"	2'-5"	1'-6"	23.7	34.8	58.5	2.17	109.	.82	35.
36"	21.2	4'-0"	13'-8"	2'-0"	2'-11"	1'-8"	29.9	45.4	75.3	2.79	128.	1.37	41.
42"	28.9	4'-6"	15'-4"	2'-3"	3'-6"	1'-10"	37.2	57.7	94.9	3.51	145.	2.16	72.

DIMENSIONS	
D	T
15"	2-1/4"
18"	2-1/2"
24"	3"
30"	3-1/2"
36"	4"
42"	4-1/2"



REINFORCED CONCRETE PIPE

The City of End
401 West
City, Oklahoma
Telephone: (505) 234-8446
Fax: (505) 234-8446
Contacts:
Robert Hill, Director of Engineering Services, Est. 344
Joan Bivens, Civil Engineer, Est. 348



REVISIONS	Date	Description
1	10/18/94	This Sheet
2	3/3/00	Specification Revise Changes

Project Number:
Project Location:
DD - 6

Sheet Title:
CONCRETE ENDWALLS FOR TRIPLE CONCRETE PIPE CULVERTS



Date: 8/1/81
Scale: NO SCALE
Cod File: G:\DATA\SPECS\005-6
Drawn By: P.B.
Designed By: R.H.
Approved By: R.H.
Sheet: of