

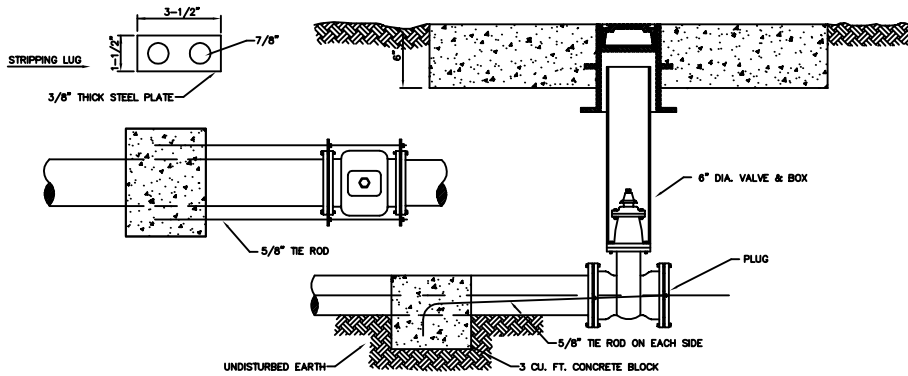
- NOTES:**
1. ALWAYS PUT A BEND OR "GOOSENECK" IN SERVICE LINE PRIOR TO CONNECTING TO PROVIDE FLEXIBILITY AND "GIVE" TO COUNTERACT THE EFFECTS OF A LOAD DUE TO SETTLEMENT OR EXPANSION AND/OR CONTRACTION.
  2. SOIL AROUND SERVICE CONNECTION SHALL BE COMPACTED TO DENSITY OF SURROUNDING SOIL.

**WATER SERVICE LINE CONNECTION**

NOT TO SCALE

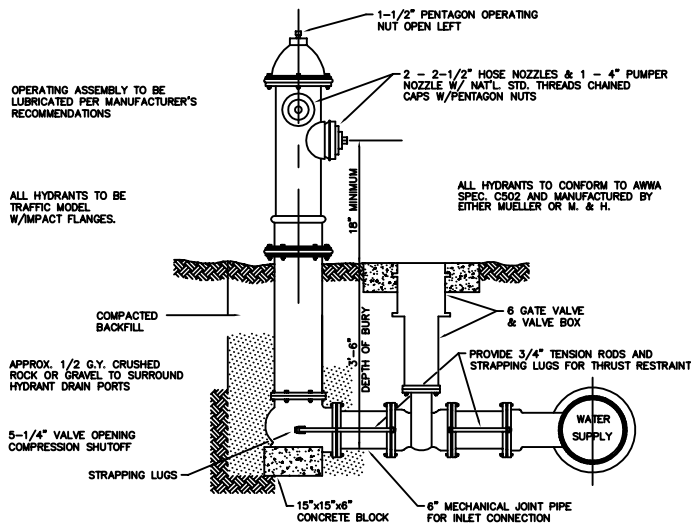
**STANDARD BLOW-OFF DETAIL**

NOT TO SCALE



**VALVE RESTRAINT DETAIL**

NOT TO SCALE



**TYPICAL FIRE HYDRANT ASSEMBLY**

NOT TO SCALE

NOTE:  
FIRE HYDRANT ASSEMBLY SHALL INCLUDE HYDRANT, GATE VALVE & BOX AND CONCRETE BLOCKING COMPLETE. "TEE" SHALL BE INCLUDED IN OTHER ITEMS.

The City of Enid  
401 West 2nd St., Box 1188, Enid, Okla. 73701  
Telephone: (800) 232-0000 Fax: (800) 232-0946

**Contacts:**

Robert Hill, Director of Engineering Services, Ext. 344  
Jason Brinkley, Civil Engineer, Ext. 348



The City of Enid, Oklahoma

**REVISIONS**

Number	Date	Description

**Project Number:**

**Project Location:**

MISCELLANEOUS WATER LINE  
CONSTRUCTION STANDARD

SWD - 2 Sht. 1

**Engr. Seal:**



Date: 6/1/00

Scale: NO SCALE

Cad File: Q:\DATA\SPES\SWD2

Drawn By: P.B./C.L.H.

Designed By: R.H.

Approved By: R.H.

Sheet:

of