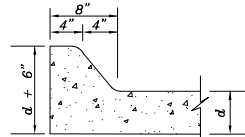
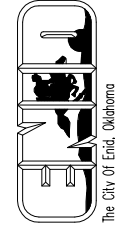
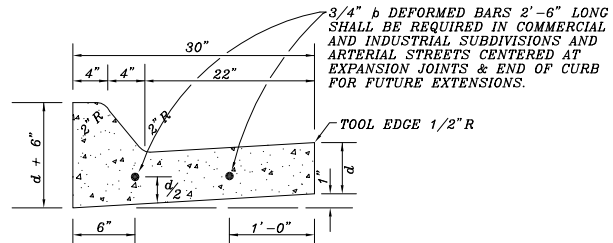


The City of Enid  
 401 West Owen K. Corbett Road  
 P.O. Box 2789  
 Enid, Oklahoma  
 Telephone: (888) 234-1940 Fax: (888) 234-8846

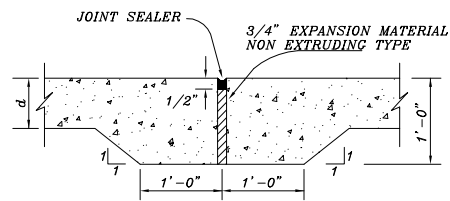
**Contacts:**  
 Robert Hill, Director of Engineering Services, Ext. 344  
 Jason Binsky, Civil Engineer, Ext. 348



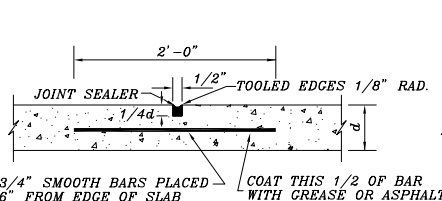
**INTERGRAL CONCRETE CURB**



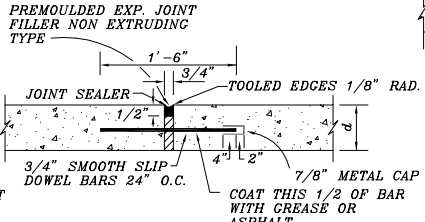
**COMBINED CURB & GUTTER DETAIL**  
 TOOLED OR SAWED CONTRACTION JOINTS SHALL BE CONSTRUCTED AT 15 FOOT INTERVALS. EXPANSION JOINTS SHALL BE CONSTRUCTED AT PC'S AND PT'S OR AT 600 FOOT INTERVALS.



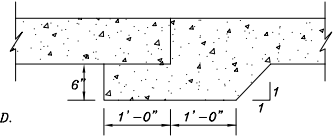
**MODIFIED EXPANSION JOINT WITH APPROVAL OF CITY ENGINEER. (LOCAL, RESIDENTIAL STREETS ONLY)**



**TRANSVERSE CONTRACTION JOINT**



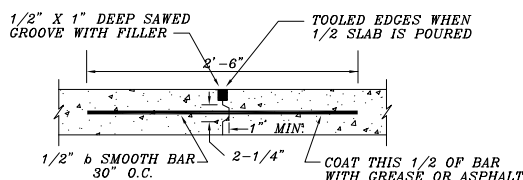
**EXPANSION JOINT**



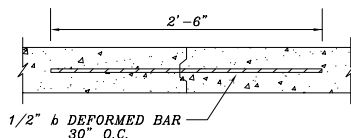
**LAP JOINT USE WHERE CONSTRUCTION JOINT IS NOT PROVIDED**

**NOTES:**  
 1. MATERIALS USED FOR JOINT FILLER AND SEALER SHALL BE IN ACCORDANCE WITH CURRENT SPECIFICATIONS FOR P.C. CONCRETE PAVEMENT.

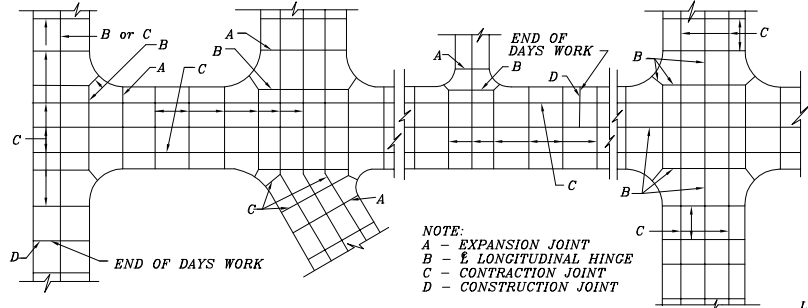
Number	Date	Description



**LONGITUDINAL HINGE JOINT (FOR FULL WIDTH MONOLITHIC CONSTRUCTION, USE EITHER THE KEYWAY OR DOWEL)**



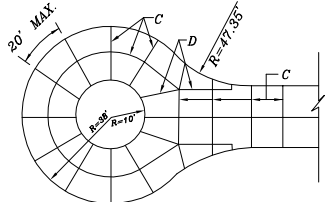
**CONSTRUCTION JOINT & LONGITUDINAL HINGE JOINT**



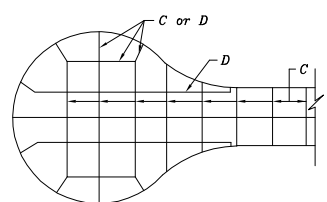
**NOTE:**  
 A - EXPANSION JOINT  
 B - LONGITUDINAL HINGE  
 C - CONTRACTION JOINT  
 D - CONSTRUCTION JOINT

LONGITUDINAL CONTRACTION JOINTS SHALL BE SPACED 12' O.C. OR LESS, AS DIRECTED BY THE ENGINEER. HINGE JOINTS & CONSTRUCTION JOINT W/O BAR WILL BE CONSIDERED AS CONTRACTION JOINTS FOR SPACING PURPOSES.

EXPANSION JOINTS SHALL BE CONSTRUCTED AT FIXED OBJECTS AND UNSYMMETRICAL INTERSECTIONS.



**CUL DE SAC OPEN CENTER**



**CUL DE SAC FULLY PAVED**

**JOINT DETAILS**

Project Number:	Project Location:

**JOINT DETAILS FOR PORTLAND CEMENT CONCRETE PAVEMENT**



Date:	6/1/00
Scale:	NO SCALE
Cad File:	G:\DATA\SPCS\PS2
Drawn By:	P.B./C.L.H.
Designed By:	R.H.
Approved By:	R.H.
Sheet:	of

PS - 2 SHIT. 1