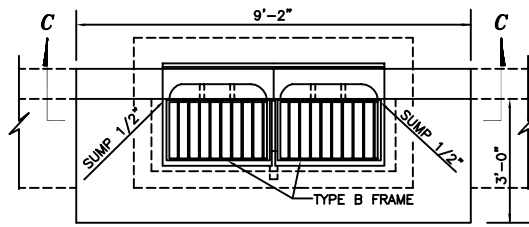
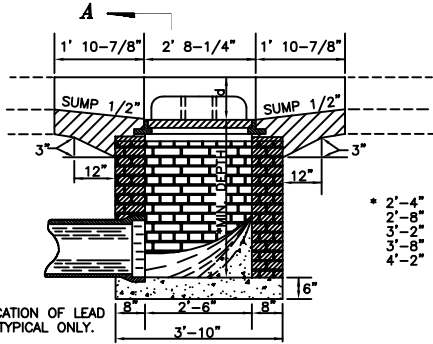


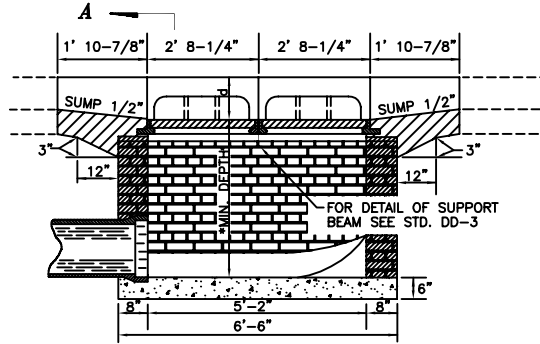
PLAN



PLAN

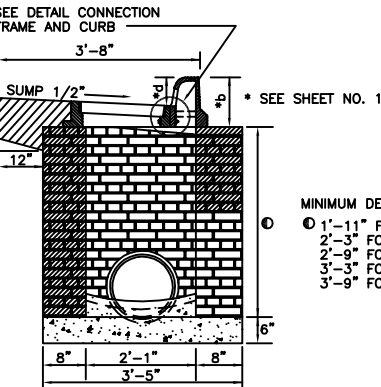


SECTION D-D
DESIGN 1
(SINGLE GRATE)

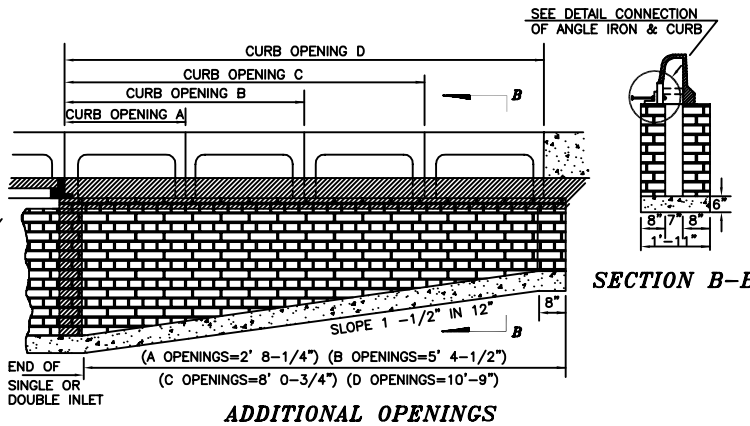


SECTION C-C
DESIGN 2 (DOUBLE GRATING)
DESIGN 3 (MULTIPLE DOUBLE GRATING)

- * 2'-4" FOR 15" RCP
- 2'-8" FOR 18" RCP
- 3'-2" FOR 24" RCP
- 3'-8" FOR 30" RCP
- 4'-2" FOR 36" RCP



SECTION A-A



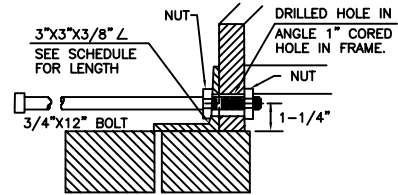
ADDITIONAL OPENINGS

SECTION B-B

QUANTITIES (FOR 18" RCSP MIN. DEPTH) ●

INLET DESIGN	CURB OPENING DESIGNATION	CLASS "A" CONCRETE CU. YD.	INLET		INLET FRAME & GRATE EACH	CAST IRON CURB INLET EACH	ANGLE IRON	
			BASE AMT.	ADD'L. C.F. PER VERT. FT.			NO.	LENGTH
1		.24	18.00	8.00	1.	1.	1	
	A	.34	25.02	11.59	1.	2.	1	2' 5-3/8"
	B	.44	30.81	15.16	1.	3.	1	5' 1-5/8"
	C	.54	35.43	18.75	1.	4.	2	7' 9-7/8"
	2A	.44	32.03	15.16	1.	3.	2	2' 5-3/8" 2' 5-3/8"
	A-B	.54	37.84	18.75	1.	4.	2	2' 5-3/8" 5' 1-5/8"
	A-C	.64	42.44	22.33	1.	5.	2	2' 5-3/8" 7' 9-7/8"
	2B	.64	43.66	22.33	1.	5.	2	5' 1-5/8" 5' 1-5/8"
2	B-C	.74	48.24	25.92	1.	6.	2	5' 1-5/8" 7' 9-7/8"
	2-C	.84	52.86	29.50	1.	7.	2	7' 9-7/8" 7' 9-7/8"
		.41	26.00	11.56	2.	2.		
	B	.61	38.82	18.72	2.	4.	1	5' 1-5/8"
3▲	D	.81	46.83	25.89	2.	6.	1	10 6-1/8"
	2B	.81	51.66	25.89	2.	6.	2	5' 1-5/8" 5' 1-5/8"
	B-D	1.01	59.69	33.05	2.	8.	2	5' 1-5/8" 10 6-1/8"
	2D	1.21	67.72	40.23	2.	10.	2	10 6-1/8" 10 6-1/8"
3▲	B	.74	41.50	18.45	4.	4.		
	B	.94	54.32	25.61	4.	6.	1	5' 1-5/8"
	D	1.14	62.32	32.78	4.	8.	1	10 6-1/8"
	2B	1.14	67.14	32.78	4.	8.	1	5' 1-5/8" 5' 1-5/8"
3▲	B-D	1.34	74.25	39.95	4.	10.	2	5' 1-5/8" 10 6-1/8"
	2D	1.54	83.22	47.11	4.	12.	2	10 6-1/8" 10 6-1/8"

● QUANTITIES SHOWN INCLUDE QUANTITIES REQUIRED TO CONSTRUCT GRATED CURB INLET AND ADDITION CURB OPENINGS. INLET QUANTITIES FOR DEPTHS GREATER THAN 2'-8" (R GRATE TO R INLET) WILL BE MULTIPLIED BY THE ADD'L. CU. FT. PER VERT. FT. AMOUNT AND ADDED TO THE BASE AMOUNT. LEADS LARGER THAN 18" TO BE DEDUCTED FROM QUANTITIES.
▲ QUANTITIES SHOWN ARE FOR 2 DOUBLE GRATE INLETS.



DETAIL OF CONNECTION
ANGLE IRON & CAST IRON CURB

NOTE: ANGLE IRON TO BE BOLTED TO CURB WITH 3(3/4"x12") MACHINE BOLTS IN EACH CURB SECTION.

DEDUCTIONS OF VOLUMES FOR INLET (CU.FT.) FOR PIPE LEADS.

21"	-	1.60	CU. FT.
24"	-	2.10	CU. FT.
27"	-	2.65	CU. FT.
30"	-	3.27	CU. FT.
33"	-	3.96	CU. FT.
36"	-	4.71	CU. FT.
42"	-	6.41	CU. FT.
48"	-	8.38	CU. FT.

The City of End
401 West Owen St., Corbett Road
End, Oklahoma 73022
Telephone: (800) 233-0600 Fax: (800) 233-0646

Contacts:

Robert Hill, Director of Engineering Services, Ext. 344
John Strang, City Engineer, Ext. 343



The City of End, Oklahoma

REVISIONS	Number	Date	Description

Project Number:	Project Location:

Sheet Title:	Project Title:
STANDARD CAST IRON CURB INLETS	PS - 1 SHT. 2



Date:	6/1/00
Scale:	NO SCALE
Cad File:	6\AMD\SPES\PS1
Drawn By:	P.B./C.H.
Designed By:	R.H.
Approved By:	R.H.
Sheet:	of