

METAL PIPE ARCH

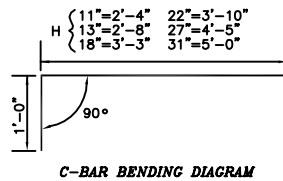
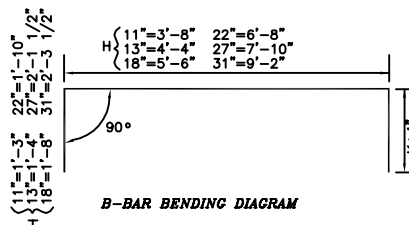
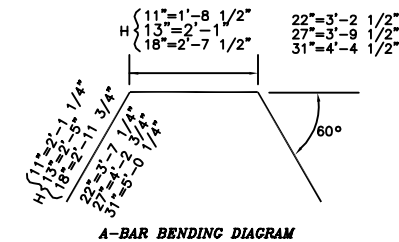


TABLE OF DIMENSIONS FOR STEEL

S	H	A-BARS			B-BARS			C-BARS			D-BARS		
		FORM NO.	SIZE	LENGTH	FORM NO.	SIZE	LENGTH	FORM NO.	SIZE	LENGTH	FORM NO.	SIZE	LENGTH
18"	11"	BENT 1	1/2 φ	5'-11"	BENT 1	1/2 φ	6'-2"	BENT 2	1/2 φ	4'-4"	STR. 1	1/2 φ	2'-4"
22"	13"	BENT 1	1/2 φ	6'-11"	BENT 1	1/2 φ	7'-0"	BENT 2	1/2 φ	4'-8"	STR. 1	1/2 φ	2'-8"
29"	18"	BENT 1	1/2 φ	8'-7"	BENT 1	1/2 φ	8'-10"	BENT 2	1/2 φ	5'-3"	STR. 1	1/2 φ	3'-3"
36"	22"	BENT 1	1/2 φ	10'-5"	BENT 1	1/2 φ	10'-4"	BENT 2	1/2 φ	5'-10"	STR. 1	1/2 φ	3'-10"
43"	27"	BENT 1	1/2 φ	12'-3"	BENT 1	1/2 φ	12'-1"	BENT 2	1/2 φ	6'-5"	STR. 1	1/2 φ	4'-5"
50"	31"	BENT 1	1/2 φ	14'-5"	BENT 1	1/2 φ	13'-9"	BENT 2	1/2 φ	7'-0"	STR. 1	1/2 φ	5'-0"

TABLE OF DIMENSIONS FOR CONCRETE

S	H	AREA IN SQ. FT.	K	G	L	M
18"	11"	1.2	11"	2'-8"	1'-7"	1'-10"
22"	13"	1.8	1'-0"	3'-0"	1'-10"	2'-1 1/2"
29"	18"	3.1	1'-4"	3'-7"	2'-4"	2'-8 1/2"
36"	22"	4.9	1'-6"	4'-2"	2'-10"	3'-3 1/2"
43"	27"	7.1	1'-9 1/2"	4'-9"	3'-4 1/2"	3'-11"
50"	31"	9.6	1'-11 1/2"	5'-4"	4'-0 1/2"	4'-8"

TABLE OF QUANT. FOR TWO END WLS.

H	CLASS A CONCRETE C.Y.	REINFORCING STEEL LBS.
11"	0.66	31.
13"	0.82	35.
18"	1.23	42.
22"	1.66	49.
27"	2.23	56.
31"	2.92	63.

SEE SHEET NO. 2 FOR GENERAL NOTES.

The City Of Enid
401 West Owen L. Corbett Road
Enid, Oklahoma 73702
Telephone: (580) 234-0000 Fax: (580) 234-8948

Contacts:

Robert Hitt, Director of Engineering Services, Ext. 244
Joan Brinkley, Civil Engineer, Ext. 348



The City Of Enid, Oklahoma

REVISIONS

Number	Date	Description

Project Number:

Project Location:

Sheet Title:

Project Title:

STANDARD HEADWALLS FOR ARCH PIPE

DD - 9 SHEET 1

Engr. Seal:



Date: 6/1/00

Scale: NO SCALE

Cad File: e:\DATA\SPECS\009

Drawn By: P.B./C.L.H.

Designed By: R.H.

Approved By: R.H.

Sheet:

of