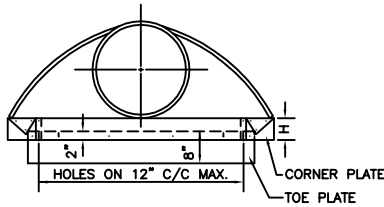
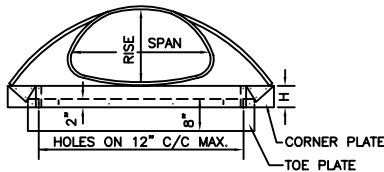


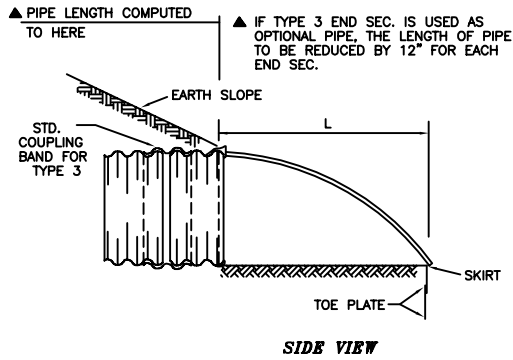
TOP VIEW



END VIEW  
ROUND METAL PIPE END SECTION



END VIEW  
ARCH METAL PIPE END SECTION

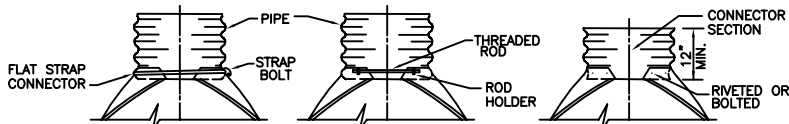


SIDE VIEW

DIMENSIONS OF END SECTION FOR ROUND METAL PIPE								
DIA.	GA.	A ±	B (MAX)	H ±	L ± 1/2	W ± 2	APPROX. SLOPE	BODY PC.
IN.		IN.	IN.	IN.	IN.	IN.		
18	16	8	10	6	31	36	2-1/2:1	1
24	16	10	13	6	41	48	2-1/2:1	1
30	14	12	16	8	51	60	2-1/2:1	1
36	14	14	19	9	60	72	2-1/2:1	2
42	12	16	22	11	69	84	2-1/2:1	2
48	12	18	27	12	78	90	2-1/4:1	2

DIMENSIONS OF END SECTION FOR METAL PIPE ARCH									
SPAN	RISE	GA.	A ±	B (MAX)	H ±	L ± 1/2	W ± 2	APPROX. SLOPE	BODY PC.
IN.	IN.		IN.	IN.	IN.	IN.	IN.		
22	13	16	7	10	6	23	36	2-1/2:1	1
29	18	16#	9	14	6	32	48	2-1/2:1	1
36	22	14	10	16	6	39	60	2-1/2:1	1
43	27	14#	12	18	8	46	75	2-1/2:1	1
50	31	12	13	21	9	53	85	2-1/2:1	2
58	36	12	18	26	12	63	90	2-1/2:1	2
65	40	12	18	30	12	70	102	2-1/4:1	2
72	44	12	18	33	12	77	114	2-1/4:1	3

#FOR ALUMINUM END SECTIONS THE 29" X 18" SHALL BE 14 GAUGE & THE 43" X 27" SHALL BE 12 GAUGE.



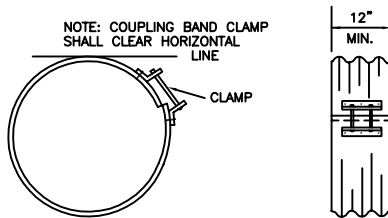
**TYPE 1**  
FOR 12" THRU 24" ONLY

**TYPE 2**  
FOR 30" & 36" ROUND PIPE AND 11" X 18" THRU 58" X 36" ARCH PIPE.

**TYPE 3**  
FOR 42" THRU 84" ROUND PIPE & 65" X 40" THRU 85" X 54" ARCH PIPE.

SEE SHEET NO. 2 FOR GENERAL NOTES.

TYPICAL METAL END SECTION CONNECTIONS



STANDARD COUPLING BAND

TOE PLATES WILL BE REQUIRED ON ALL METAL END SECTIONS UNLESS SOLID ROCK IS ENCOUNTERED. HOLES IN TOE PLATE TO BE PUNCHED TO MATCH HOLES IN SKIRT LIP, 3/8" BOLTS TO BE FURNISHED. LENGTH OF TOE PLATES FOR ROUND PIPE END SECTIONS IS W+10" FOR 12" TO 30" DIA. PIPE, W+22" FOR 36" TO 48" DIA. PIPE. LENGTH OF TOE PLATES FOR ARCH PIPE END SECTIONS IS W+10" FOR A RISE OF 11" TO 27" AND W+18" FOR A RISE OF 31" TO 44".

CONNECTOR SECTION, CORNER PLATE AND TOE PLATE TO BE SAME GAGE & MATERIAL AS THE SKIRT AND SHALL BE INCLUDED IN PRICE BID FOR END SECTION.

The City of Enid  
401 West  
P.O. Box 1718  
Enid, Oklahoma 73701  
Telephone: (800) 234-9946  
Fax: (800) 234-9946

**Contacts:**  
Robert Hill, Director of Engineering Services, Est. 344  
James Whitty, Civil Engineer, Est. 348

The City of Enid, Oklahoma

REVISIONS	
Number	Description
1	10/18/94 This Sheet
2	5/2/00 Specification Review Change

Project Number: \_\_\_\_\_  
Project Location: \_\_\_\_\_

STANDARD  
PREFABRICATED METAL CULVERT  
END SECTIONS

DD - 7 - SHT. 1

Engr. Seal:  
**REGISTERED PROFESSIONAL ENGINEER**  
ROBERT S. HITT  
13111  
OKLAHOMA

Date:	8/1/81
Scale:	NO SCALE
Cad File:	G:\DATA\SPES\DD07
Drawn By:	P.B.
Designed By:	R.H.
Approved By:	R.H.
Sheet:	of