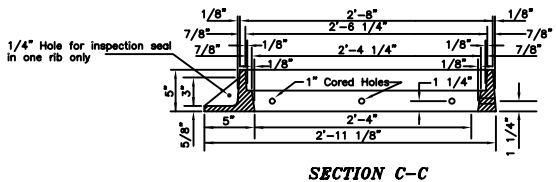
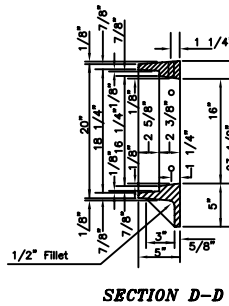
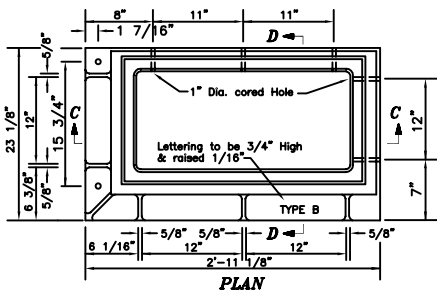


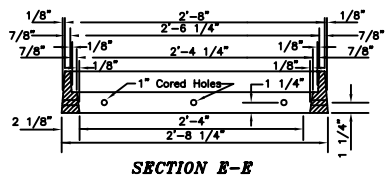
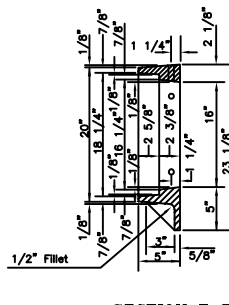
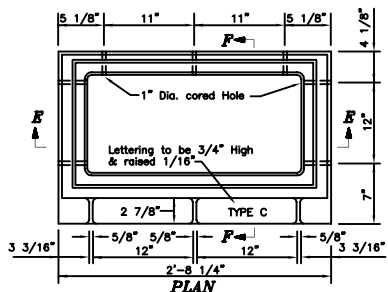
NOTE: ONLY ONE TYPE "A" FRAME IS REQUIRED FOR INLET DESIGN NO. 1.

**TYPE "A" FOR INLET DESIGN NO. 1**



NOTE: MAKE ONE FRAME AS SHOWN AND ONE REVERSED FOR DOUBLE FRAMES.

**TYPE "B" FOR INLET DESIGN NO. 2 AND 3.**

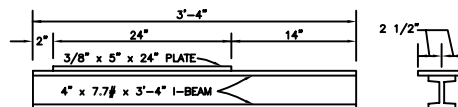


NOTE: TWO TYPE "B" FRAMES AND TWO TYPE "C" FRAMES ARE REQUIRED FOR INLET DESIGN NO. 3.

**TYPE "C" FOR INLET DESIGN NO. 3**

**GENERAL NOTES**

- All Construction and Materials requirements shall be in accordance with the current Standard Specifications.
- Castings shall meet the requirements of AASHTO M-105 Class 20.
- Inlet Design No. 2 requires 2-Type "B" Frames and 2-3/4" x 5" bolts with nuts to secure Frames together and one I-Beam support (4" x 7.7# x 3'-4"). If built on curved curb the inlet requires 1-3/4" x 5" bolt and 1-3/4" x 6 1/2" bolt with nut to secure Frames together with 5" x 24" x 3/8" plate spot welded in four places to I-Beam support (4" x 7.7# x 3'-4").
- Inlet Design No. 3 requires the same appurtenances as Design No. 2 with two or more Type "C" Frames located between the two Type "B" Frames and additional I-Beam support or I-Beam with plate and a pair of bolts with nuts for each type "C" Frame added plus one additional pair of bolts and support.
- All bolts required for these structures shall be machine bolts and shall conform to the requirements of AASHTO-164 and shall be Cadmium plated or Galvanized.



**I-BEAM SUPPORT**

TO BE USED WHEN STRUCTURE IS BUILT ON CURVED CURB

The City of Enid  
401 West 6th St., Enid, Oklahoma 73702  
Telephone: (405) 237-2640, Fax: (405) 234-2646

**Contacts:**  
Robert Hill, Director of Engineering Services, Ext. 344  
Robert Hill, 2048 Engineering, Ext. 344

The City Of Enid, Oklahoma

REVISIONS

Number	Date	Description
1	10/18/84	This Sheet
2	5/2/00	Specification Review Changes

Project Number:	
Project Location:	

Sheet Title: **STANDARD STORM SEWER INLET FRAMES**

Project Title: **DD - 3**

Engr. Seal:

Date:	8/1/81
Scale:	NO SCALE
Cad File:	0:\DATA\SPES\002-3
Drawn By:	P.B.
Designed By:	R.H.
Approved By:	R.H.
Sheet:	of