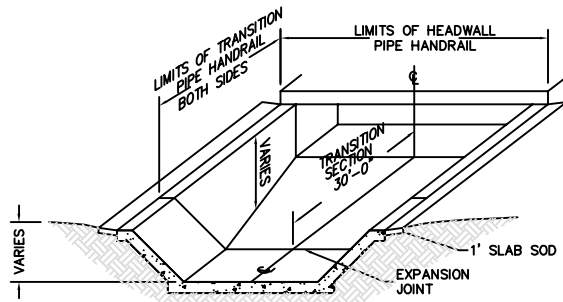
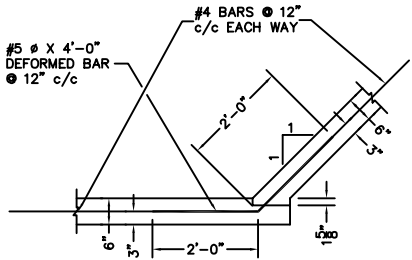


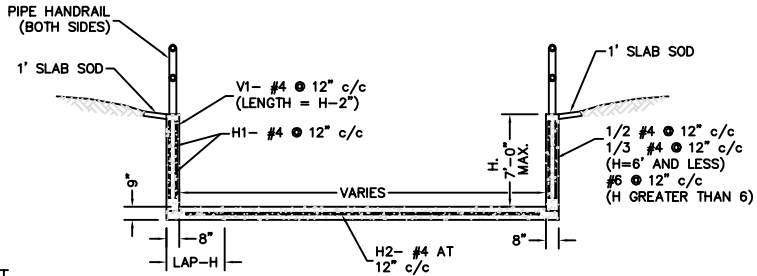
INSTALL #4 BARS X 3'-0" LONG @ 12" C/C IN FLOOR AND WALLS AT OUTLET OF 6'X4' RCB. BARS TO BE TIES TO CONC. DRAINAGE CHANNEL.
RCB TIE DETAIL



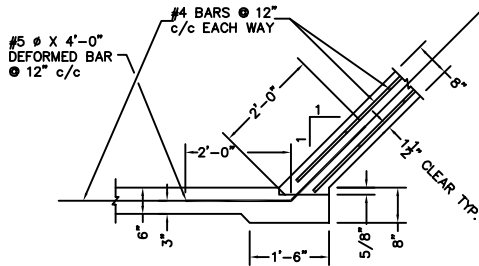
ELEVATION OF CONCRETE CHANNEL LINER
30' TRANSITION TO R.C. BOXES
VERTICAL TO 1:1 SIDESLOPE



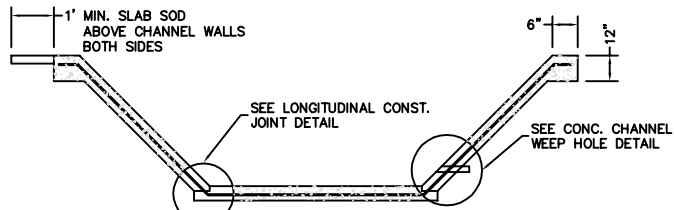
LONGITUDINAL CONSTRUCTION JOINT
FOR 6" BOTTOM & 6" SIDE WALLS
6" WALLS FOR DEPTHS OF 0' TO 5'



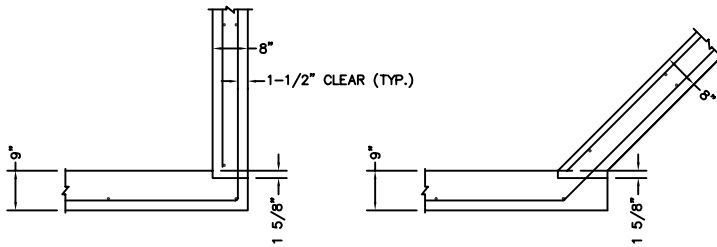
TYPICAL THROUGH TRANSITION SECTION
ODOT TYPE II-C RETAINING WALL SECTION (MODIFIED)



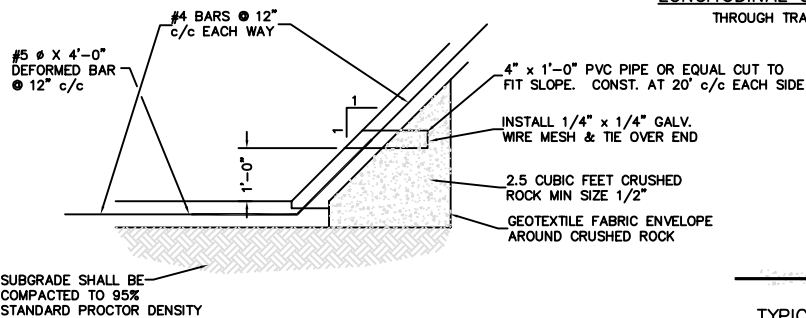
LONGITUDINAL CONSTRUCTION JOINT
FOR 6" BOTTOM & 8" SIDE WALLS
8" WALLS FOR 2/3 THE WALL HEIGHT FOR CHANNELS ABOVE 5'



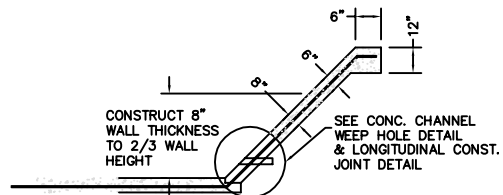
TYPICAL CONCRETE CHANNEL LINER DETAIL



LONGITUDINAL CONSTRUCTION JOINT
THROUGH TRANSITION SECTION



CONCRETE CHANNEL WEEP HOLE DETAIL



TYPICAL CONCRETE CHANNEL LINER DETAIL
FOR WALL HEIGHT ABOVE 5'

The City of Enid
401 West Oklahoma Road
Enid, Okla. 73701
Telephone: (800) 233-6000, Fax: (800) 234-8848

CONTACTS:

Robert Hill, Director of Engineering Services, Est. 344
Jason Brinkley, Civil Engineer, Est. 348



The City of Enid, Oklahoma

REVISIONS

Number	Date	Description

Project Number:

Project Location:

Sheet Title:

CONCRETE CHANNEL LINER & DETAILS

Project Title:

DD-20

Engr. Seal:

Date: 6/1/00

Scale: nts

Cad File: c:\DATA\SPRCS\4620

Drawn By: CLH

Designed By: JB

Approved By: RH

Sheet: 1

of 1