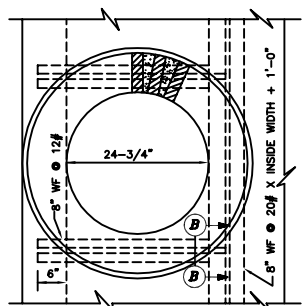
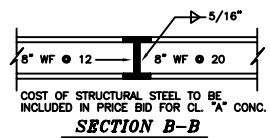


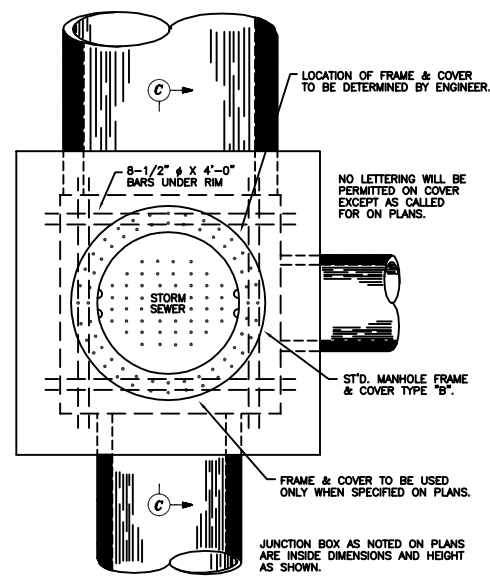
SECTION



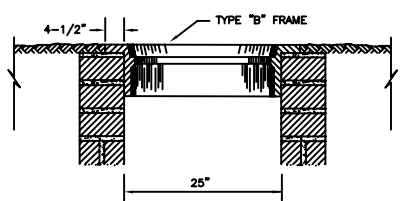
SECTION A-A



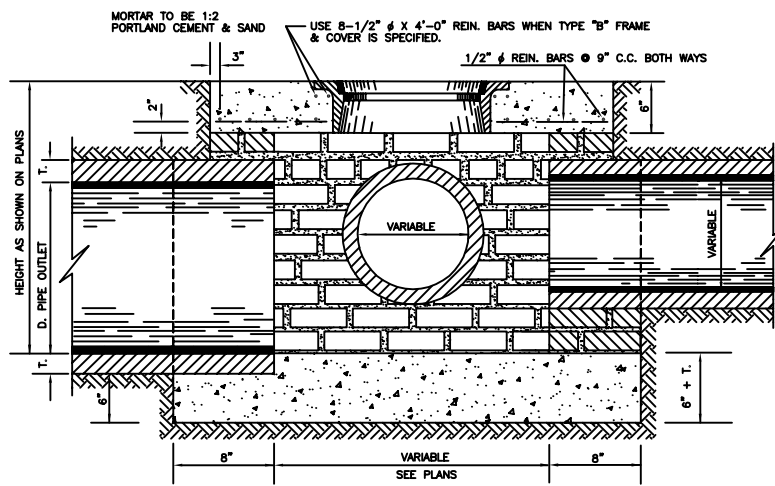
SECTION B-B



PLAN



SECTION SHOWING TYPE 'B' FRAME FOR USE OUTSIDE OF SURFACING



SECTION C-C
DETAIL OF BRICK MASONRY JUNCTION BOX LOCATED OUTSIDE OF SURFACING

GENERAL NOTES

- All Manholes to be 4' inside diameter unless larger diameter is required.
- For Details of Frame and Cover see Standard Manhole Frame and Cover, SWD-3.
- Brick Masonry in straight and circular walls a radius of 2' or greater shall be stretchers with every fifth course headers. Circular walls with a radius less than 2' every fifth course shall be stretchers and the remainder headers.
- Steps to be placed at Header courses when required.
- Mortar to be 1:2 Portland Cement and Sand. Joints to be shovd Joints completely filled with mortar. Buttered Joints will not be permitted. Where a mortar coat is required it shall be 1/2" thick and shall be applied while brick masonry is clean and damp.
- Manholes to be paid for as "Manhole" (Each) to 5'-0" in height. Height over 5' will be paid for as "Additional Depth in Manhole" (Vert. Ft.).
- When Pre-cast Storm Sewer Manholes are used the Material shall meet AASHTO Designation M-199 and the design shall be submitted to the Engineer for approval.
- Junction Box wall construction to be measured by cu. ft. of brick masonry and to be paid for as "Junction Boxes" (Cu. Ft.). Deductions will be made for openings exceeding 18" diameter.
- Reinforcing Steel will be included as a part of the cost of the structure complete and will not be measured as a pay item.

The City of Enid
401 West Broadway
Enid, Oklahoma 73703
Telephone: (581) 241-6400 Fax: (581) 241-8848

Contacts:
Robert Hill, Director of Engineering Services, Est. 344
Robert Hill, Civil Engineer, Est. 343



REVISIONS			
Number	Date	Description	Title Sheet
1	10/16/84		
2	5/2/00	Specification Review Changes	

Project Number:	
Project Location:	

Sheet Title: **STANDARD MASONRY JUNCTION BOX**

DD - 1 SHT. 2



Date: 8/1/81
Scale: NO SCALE
Cad File: G:\DATA\SPCS\001
Drawn By: P.B.
Designed By: R.H.
Approved By: R.H.
Sheet: of